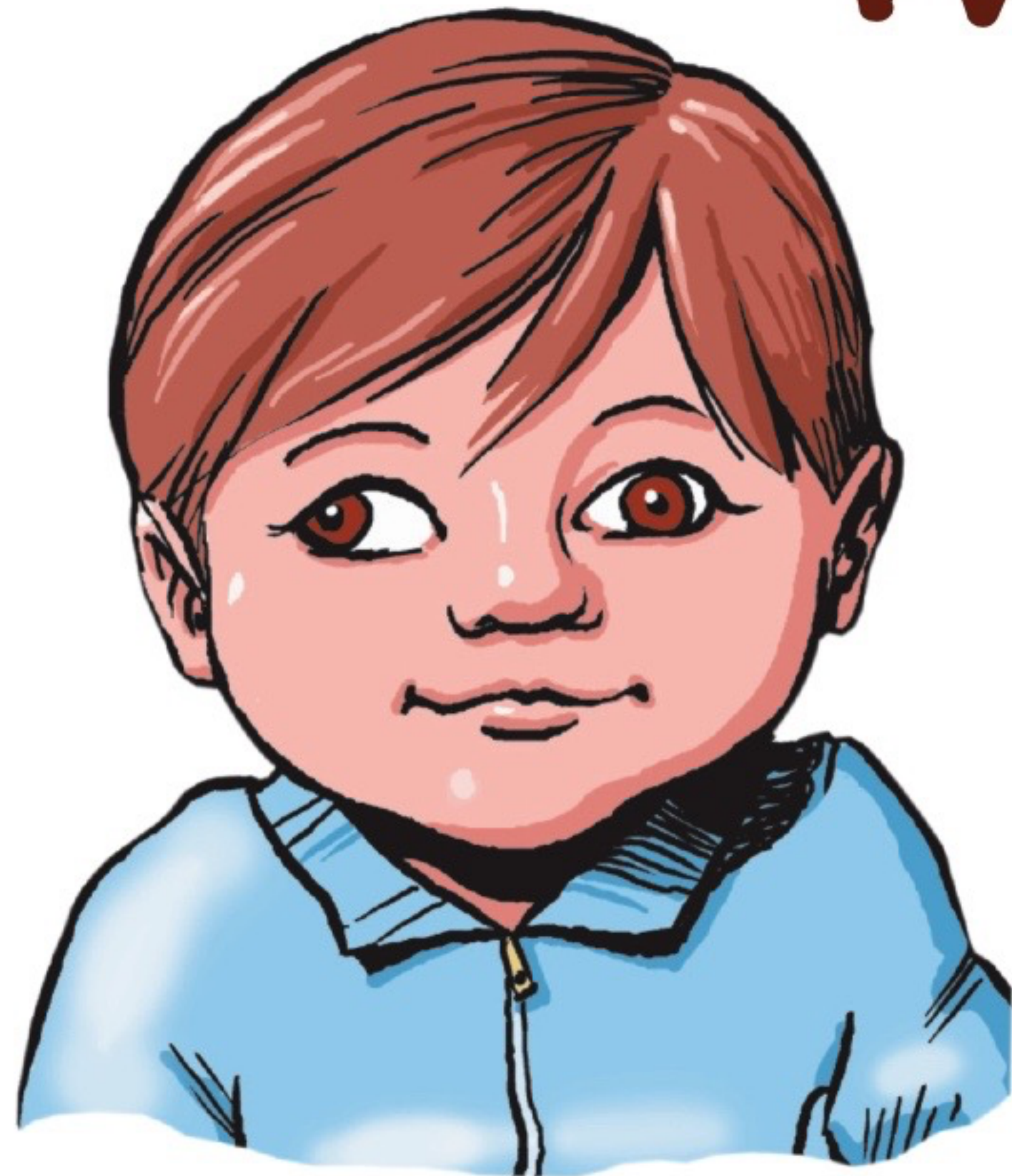


Retinoblastoma

What to Look for



Wandering Eyes



White Pupil



Bulging Eyes

These 3 images illustrate signs of **Retinoblastoma** the most common intracocular cancer seen in children from birth

Know The Warning Signs

See an eye doctor if your child has these symptoms!

- White pupil
- Bulging eye
- Crossed eye
- Cloudy cornea
- Wandering eyes
- Walks into walls on one side

Sponsored by The Eye Cancer Foundation **Saving Sight, Saving Life**
<https://www.eyecancer.com/donate>